



**St John Fisher**  
Catholic High School



# **Sixth Form Prospectus**

## **2025-2027**



## Contents

<b>Our Vision</b> .....	<b>4</b>
<b>Mission Statement</b> .....	<b>4</b>
<b>From the Headteacher</b> .....	<b>5</b>
<b>The Sixth Form at St John Fisher</b> .....	<b>6</b>
<b>Spiritual, Moral, Social, Cultural and Physical Development</b> .....	<b>7</b>
<b>Life in the Sixth Form</b> ..... <b>Get Involved!</b> .....	<b>8</b>
<b>Entry Requirements: Vocational qualifications</b> .....	<b>9</b>
<b>Entry Requirements: A Levels</b> .....	<b>9</b>
A Level Art, Craft and Design (AQA).....	10
A Level Biology (AQA) .....	11
Level 3 Business Extended Certificate (Cambridge Technical) .....	12
A Level Chemistry (AQA).....	13
A Level English Language (OCR) .....	14
A Level English Literature (OCR).....	15
A Level French (AQA) .....	16
A Level Geography (OCR) (The King’s School) .....	17
Level 3 Health and Social Care Diploma or Extended Diploma (Cambridge Technical) .....	18
A Level History (Edexcel).....	19
Level 3 IT Diploma (Cambridge Technical) .....	20
A Level Mathematics (AQA).....	21
A Level Physics (Edexcel) (The King’s School).....	22
A Level Psychology (AQA) (The King’s School).....	23
A Level Religious Studies (Edexcel).....	24
A Level Sociology (OCR) .....	25
A Level Spanish (AQA) .....	26
Level 3 Sports Diploma (YDP) in Sport and Physical Activity (Cambridge Technical).....	27
Level 3 Extended Certificate in Sport and Physical Activity (Cambridge Technical) .....	28
<b>Post-16 Admissions</b> .....	<b>29</b>
<b>How to Apply</b> .....	<b>30</b>
Timeline .....	30
Application for Sixth Form Admission – September 2025 (For completion by SJF students only).....	31
Application for Sixth Form Admission – September 2025 (For completion by External applicants only) .	33

## Our Vision

St John Fisher School is an inclusive and welcoming Catholic community, committed to excellence, success and lifelong learning.

Each individual is valued and supported to reach their full potential as a Child of God.

## Mission Statement

**“I have come that they may have life and have it to the full”**

St John’s Gospel Chapter 10

St John Fisher Catholic High School provides a learning environment in which:

- We know through our spirituality that everyone is a loved creation of God and that every person has a lesson they can teach someone else.
- We will take every opportunity to help each other and those less fortunate than ourselves.
- We will do our best to reach our aspirations and celebrate our successes.



## From the Headteacher



Dear Student

We have reached the point where you need to make some decisions about the next stage of your life. In the modern world it is essential that everyone has as many qualifications as possible and so you must decide which route to take next: stay at school, continue education elsewhere or start some work-based training such as an apprenticeship.

Your parents, teachers and external agencies are here to support you in making this decision. It is important that you do not rush this decision and that you make it based on what you want to do and what you are best suited to: you should try to make the best use of the talents and skills that God has given you.

This booklet is primarily concerned with what is available to you if you choose to study at St John Fisher. It therefore contains outlines of the courses available. Do carefully check which courses are available and find out which you would be best suited for. Our staff can help you make these decisions.

We have transformed our Sixth Form over the last few years and intend for it to continue to grow and flourish in our excellent new buildings. We would very much like you to study with us but I stress again that you must make the decision that is right for you.

Yours sincerely

*Kate Pereira*

Headteacher

## The Sixth Form at St John Fisher

We firmly believe that in order to be successful in the Sixth Form, students need to be **respectful, responsible** and **resilient**.

Being in the Sixth Form at St John Fisher is a vibrant and stimulating experience. We pride ourselves on knowing each student so that we can support and challenge them, encouraging them to have high aspirations which help them to be successful. We aim to develop the whole person, where each individual is able to flourish not only academically but also socially, morally and spiritually. Students leave us with self-confidence and high aspirations, demonstrating respect and tolerance for others.

**‘I have come that they may have life  
and have it to the full’ (John 10:10)**

Students are expected to be responsible and independent in their learning and conduct. We will support each individual throughout their development of excellent learning habits which are conducive to studying at University, completing an Apprenticeship, gaining employment and beyond. It is for the reasons above that each student will have their own personalised programme of study to follow based on their GCSE results and personal needs, aspirations and interests.

Our school works in partnership with The King’s School and is therefore able to offer a wider selection of courses for study at A Level. This may mean that you study one of your chosen subjects there.

We also work very closely with Peterborough Regional College and the City College to provide a smooth transition to other Post 16 programmes of study. We provide independent and impartial advice to all students during their time in Year 11. This is to ensure everybody has a place of education, training or employment to enter when they complete Year 11.

In addition to your academic studies, we offer many enrichment opportunities to develop you outside of the classroom. These opportunities help you to develop your leadership skills, problem solving ability and confidence to encourage you to be aspirational and support you to ensure that you are resilient in your studies.

We also offer guidance when making decisions for your future Post 18 and ensure that you have a clear vision of where you want to be, whether that be at University, in an Apprenticeship or employment.

Entry onto a Post 16 programme of study will depend on your GCSE results and on you satisfying the general entry requirements of our Sixth Form. Overleaf is an indication of the different routes available to you.

*Mrs Reay*  
Assistant Headteacher

# Spiritual, Moral, Social, Cultural and Physical Development

## Core RE

As a Catholic school, Core RE is an important part of our curriculum. You will study four different perspectives/areas of study: Revelation, Community, Celebration and Way of Life. There is also an annual Sixth Form retreat on one of the two Focus Days.

## Core PE

In order to encourage a healthy lifestyle and to continue your interest in a broad selection of activities, you will study one lesson per week of PE. There is no formal assessment for Physical Education at Key Stage 5. Some of the activities are: Badminton, Basketball, Fitness, Netball, Rugby and Trampolining. During this session you will be offered the opportunity to study the Sports Leadership Level 3 Award.

## Active Citizenship

All students study PSHE, which also covers key employability skills to prepare students for life beyond the Sixth Form.

In addition there are many enrichment opportunities including:

- Sports Leadership
- Extended Project Qualification
- Work Experience
- Volunteering
- Participation in form and house assemblies
- Student Leadership Team
- Paid lunchtime supervisor positions

## Life in the Sixth Form ..... Get Involved!

If you are enthusiastic and keen to get involved in school activities... the Sixth Form is the place for you to be!

### Reading Buddies

Students act as Reading Buddies by meeting Year 7 students during two registration periods per week. This is an invaluable activity, which has a proven track record of success. The Year 7 students' confidence builds as does their level of literacy. The reading buddy is rewarded by being part of this younger person's success.

### Leadership Opportunities

St John Fisher Catholic High School provides many roles which require our students to develop their leadership skills:

- Head Students and Deputies,
- House Ambassadors (who are responsible for mentoring and supporting students as well as organising social and charity events);
- Student Voice Ambassadors (who are responsible for organising opportunities for students to have their say in key school decisions);
- School Tours and Interview Ambassadors (who showcase the school for different events and are involved in interviewing new staff).

If you are interested in any of these Ambassador roles, you will need to demonstrate creative ideas and a proactive approach.

### The Great Get Together

Alongside the Sixth Form Student Leadership Team, Sixth Form students organise 'The Great Get Together'- an opportunity for all students to share food and eat together. This event was inspired by Jo Cox MP to celebrate that we have more in common than that which divides us.

### Social Events

Social events differ from year to year but previous events include the Sixth Form Christmas Meal, Summer BBQ, West End Theatre visits, bowling trips, Houses of Parliament visit and the Year 13 Prom.





## Entry Requirements: Vocational qualifications

To study Level 3 Vocational courses you must have achieved at least 4 GCSEs or equivalent at Grades 9 - 4 (Health and Social Care, Business, IT), including a 4 in English language or 4 Grades 9 - 3 (Sports Scholarship), including a 4 in English language or Science.

Business (Cambridge Technical)	Grade 4 or above in English Language and Grade 4 or above in 3 other GCSEs
Health and Social Care (Cambridge Technical)	Grade 4 or above in English Language and Grade 4 or above in 3 other GCSEs
IT (Cambridge Technical)	Grade 4 or above in English Language and Grade 4 or above in 3 other GCSEs
Sports and Physical Activity (Cambridge Technical)	Grade 4 or above in English Language or Science and Grade 3 or above in 3 other GCSEs

## Entry Requirements: A Levels

In order to enter our Sixth Form to study A Levels, you must have achieved **at least 5 GCSEs at Grades 9 - 5, including English Language** and also in Maths if you wish to study STEM subjects.

There are specific entry requirements for the subjects listed below:

A Level Art, Craft and Design (AQA)	An extensive and high quality portfolio of work or Grade 5 or above in GCSE Art or Textiles
A Level Biology (AQA)	Grades 66 or above in GCSE Combined Science
A Level Chemistry (AQA)	Grades 66 or above in GCSE Combined Science
A Level English Language (OCR)	Grade 6 or above in GCSE English
A Level English Literature (OCR)	Grade 6 or above in GCSE English Literature
A Level French (AQA)	Grade 5 or above in GCSE French
A Level Geography (OCR)	Grade 6 or above in GCSE Geography
A Level History (Edexcel)	Grade 6 or above in GCSE History or Level 6 in GCSE English
A level Mathematics (AQA)	Grade 6 or above in GCSE Maths
A Level Physics (Edexcel)	Grade 77 or above in GCSE Science
A Level Psychology (AQA)	Grade 6 or above in GCSE Maths and English Language
A Level Religious Studies (Edexcel)	Grade 6 or above in GCSE RE and Level 5 in GCSE English
A Level Sociology (OCR)	Grade 6 or above in GCSE English
A Level Spanish (AQA)	Grade 5 or above in GCSE Spanish

Please read through the Post 16 Admissions on page 29 of this Prospectus for details of general admission to the Sixth Form.

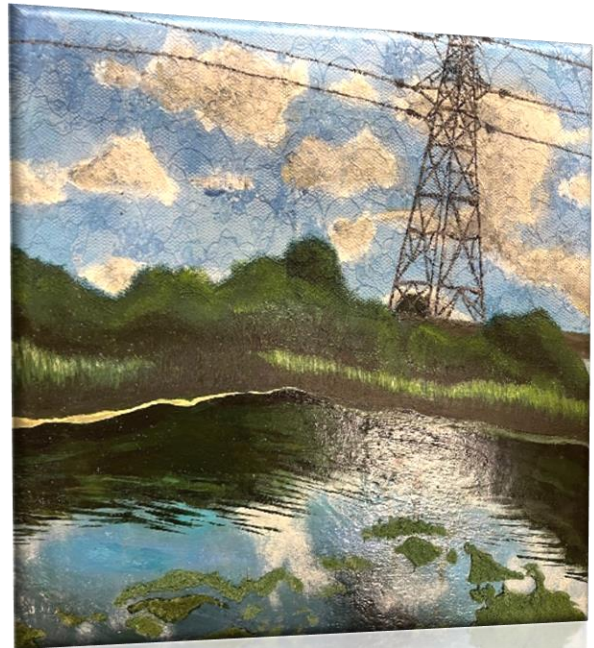
# A Level Art, Craft and Design (AQA)

## What does this course involve?

This Art course engages students in practical studio work, which is informed by relevant contextual study. Art and Design promotes an experimental approach using a wide range of media including, painting, print, mixed media and digital imagery. Observational drawing underpins all Art practice and is seen as an essential requirement for the course.

You are encouraged to further your artistic interests, understanding and skills whilst developing a personal creative response within the supportive environment of the art studios. The appreciation and study of art is integral to the course and this culminates in the second year with an illustrated written study of between 1,000 and 3,000 words.

The major requirement for A level Art and Design courses is the need to be creative, original and flexible and have a strong independent work ethic. These courses offer exploration and experimentation with a wide range of materials and processes that encourage and nurture the creative process.



## What will I study?

Throughout the course you will be encouraged to build upon both traditional and contemporary methods of working. You are instructed to develop personal responses to a variety of themes exploring your own independent thoughts and ideas. Throughout the course emphasis is placed upon line, tone, colour, texture, shape, form and space. You may work with a variety of media, such as paints, pastels, pencils, pen, ink, water-colours, fabric, print and digital and are encouraged to develop a multi-media approach. You can select one approach or combine techniques as you progress.

## How is the course assessed?

All coursework is internally assessed by subject tutors and then externally verified by an exam board moderator. You will produce a portfolio of work which will be worth 100% of your Year 12 grade. You will not sit an exam until the end of Year 13. You will produce a written study in Year 13.

## What can I do after this course?

If you are creative, enjoy working independently and can problem solve Art and Design could be the right choice for you. You must be self-motivated, be able to work independently and able to structure your time.

# A Level Biology (AQA)

## What does this course involve?

The course involves a diverse range of topic areas, essentially the study of living things, from minute bacteria to the enormous blue whale and from tiny algae to a gigantic aspen tree, and the changes that take place between them and their environment. You will complete practical work as an integral part of the course.

## What will I study?

- Topic 1: Biological molecules
- Topic 2: Cells
- Topic 3: Organisms exchange substances with their environment
- Topic 4: Genetic information, variation and relationships between organisms
- Topic 5: Energy transfer in and between organisms
- Topic 6: Organisms respond to changes in their internal and external environments
- Topic 7: Genetic, populations, evolution and ecosystems
- Topic 8: The control of gene expression

## How is the course assessed?

All topics are assessed at the end of year 13 in 3 written exams for the full A level. Practical skills will be assessed within the written exams as well as a practical endorsement with the full A level.



*"It's been a pleasure to study biology at St John Fisher with my biology teachers who are always willing to help and encourage us to continue studying no matter what. One of the most enjoyable topics in Year 12 was studying Gas Exchange in insects and their unique structures allowing them to exchange gases."*

*Year 12 Student*

# Level 3 Business Extended Certificate (Cambridge Technical)

## What does this course involve?

Extended Certificate in Business is a subject, directly related to the exciting real world of business. You will learn by completing tasks and assignments that are based on realistic workplace situations activities and projects.

## What will I study?

The course consists of 5 units including 3 mandatory units and 2 optional units. The mandatory units are:

- The Business Environment
- Working in Business
- Customers and Communication

The optional units will be chosen to fit the needs and interests of the students on the course.

## How is the course assessed?

The Level 3 Extended Certificate is coursework and exam based. After you have been taught how to complete the assignments, you will be closely guided through the completion of drafts of all of your work. All coursework is marked by your teachers and some moderated by the exam board. 2 out of the 5 units will be assessed by externally set examination from the exam board.

## What can I do after this course?

There is potential for the qualification to prepare you for employment and to provide skills and techniques required to progress into University and it is suitable for those who have decided that they wish to enter a particular area of work. A Level 3 Extended Certificate in Business will give you the basic skills and knowledge you require in areas such as finance, law, economics, management and marketing.

### **Why did I choose Cambridge technical Business?**

*"I chose Business as I was interested in the different parts it has. Sometimes we could be studying about finance ready for the exam and at other times we could be studying something different like Advertising for our coursework. This mixed learning worked well for me."*

*Year 12 Student*

# A Level Chemistry (AQA)

## What does this course involve?

Chemistry is the study of the properties of the materials in the world around us. The chemist looks at and tries to interpret changes in materials, from the apparently simple, such as the burning of hydrogen, to the more complex, such as reactions in the body. At the same time, the chemist may be interested in energy changes, or how fast a reaction proceeds. Another important aspect is working out the structure of materials and identifying their constituents. The chemist employs his or her skills to use both simple and complex analytical techniques to determine the composition of every kind of substance. Research and development of new materials is a most important part of chemistry. These new materials include drugs, plastics, rubbers and detergents to name but a few. These are just some of the things which chemistry involves; look around you and you will see the work of the chemist everywhere.



## What will I study?

The AQA Chemistry course builds upon the principles learnt at GCSE as well as introducing new concepts. Aspects of the three strands of chemistry are studied in year 12 and then developed further in year 13:

- Physical
- Organic
- Inorganic

## How is the course assessed?

Students will be assessed by examinations. There are 3 exams which assess all content, including practical skills.

During the 2 years of study students will also be assessed, in the laboratory, on their practical skill and will have the opportunity to achieve a Practical Endorsement in addition to their A level grade.

## What can I do after this course?

This course is suitable for students who achieved a 6 or above in GCSE Science and are interested in Science related courses or careers.

*"Fun and exhilarating practicals."*

*Year 13 Student*

*"Changed my perspective on careers"*

*Year 13 Student*

# A Level English Language (OCR)

## What does this course involve?

A level English Language is a two year course suited to those students who are interested in learning more about how language 'works'. There is a strong theoretical element but much of the work is based on discussion, activities and fieldwork. Students must be capable of dealing with concepts and need writing skills demonstrated by a minimum of a grade 6 in their GCSE results.

## What will I study?

The course will explore some of the following:

- Linguistic analysis of authentic texts
- Original writing for a real-world purpose on a topical language issue
- Analysis of how children acquire language
- Language in the media
- How language changes over time
- An investigation into an area of each learner's particular individual interest

## How is the course assessed?

This is a skills based mark scheme. The specification in English Language is designed to encourage the development of analysing texts in context.

You will prepare for the language exam, which will focus on the close reading and analysis of different kinds of writing.

## What can I do after this course?

If you enjoy writing and thinking about language then this is the course for you. Many careers require academic A Levels, particularly Law, Medicine and Teaching; English Language is therefore considered as a valuable subject to attain.

*"I love English Language because it opens your eyes to something you do every day without a second thought - speak. You learn all the words, rules, and sounds of speech that you never realised existed. It's really interesting and makes you want to analyse every conversation you have or hear."*

*Year 12 Student*

# A Level English Literature (OCR)

## What does this course involve?

The A level course is comprised of three units over two years. Students study a minimum of eight texts, including at least two examples of each of the genres of prose, poetry and drama, to develop their ability to analyse and evaluate literary texts across a variety of genres and periods. Students must be capable of dealing with concepts and need writing skills demonstrated by a minimum of a grade 6 in their GCSE results.

## What will I study?

### Component 01: Drama and Poetry Pre-1900

**In Section 1:** Shakespeare, students study one Shakespeare play from the following:

- Coriolanus
- Hamlet
- Measure for Measure
- Richard III
- The Tempest
- Twelfth Night

### In Section 2:

Drama and poetry pre-1900, students' study one pre-1900 drama text and one pre-1900 poetry text.

- Drama texts:
  - Christopher Marlowe: Edward II
  - John Webster: The Duchess of Malfi
  - Oliver Goldsmith: She Stoops to Conquer
  - Henrik Ibsen: A Doll's House
  - Oscar Wilde: An Ideal Husband
- Poetry texts:
  - Geoffrey Chaucer: The Merchant's Prologue and Tale
  - John Milton: Paradise Lost Books 9 & 10
  - Samuel Taylor Coleridge: Selected Poems
  - Alfred, Lord Tennyson: Maud
  - Christina Rossetti: Selected Poems

### Component 03: Literature Post-1900

This component encourages individual study, interest and enjoyment of modern literature. Students study three literary texts, which must include one prose text, one poetry text, and one drama text. All texts must have been first published or performed after 1900, and at least one must have been first published or performed after 2000. Texts in translation are not permitted.

There are two tasks:

- Close reading or re-creative writing with commentary – both must be based on one literary text
- Comparative essay – must be based on two literary texts.

### Component 02: Comparative and contextual study

There are five topic areas:

- American Literature 1880—1940
- The Gothic
- Dystopia
- Women in Literature
- The Immigrant Experience

Students choose one topic area and study at least two whole texts, one of which must be from the core set text list for their chosen topic area:

- American Literature 1880-1940
  - F. Scott Fitzgerald: The Great Gatsby
  - John Steinbeck: The Grapes of Wrath
- The Gothic
  - Angela Carter: The Bloody Chamber and Other Stories
  - Bram Stoker: Dracula
- Dystopia
  - Margaret Atwood: The Handmaid's Tale
  - George Orwell: Nineteen Eighty-Four
- Women in Literature
  - Jane Austen: Sense and Sensibility
  - Virginia Woolf: Mrs Dalloway
- The Immigrant Experience
  - Mohsin Hamid: The Reluctant Fundamentalist
  - Henry Roth: Call It Sleep

*"One of the reasons I love this A Level is how you can express your personal views and passions in each essay. When studying both older and modern texts you will always be able to recognise a theme/debate that's relevant now, I think it's beautiful to see how fiction reflects reality."*

*Year 12 Student*

## How is the course assessed?

Written examination: 2 hours, 30 minutes, 40% of qualification. Closed text exam.

# A Level French (AQA)

## What does this course involve?

This exciting course offers the opportunity to study a film, literature and history alongside the culture, politics and social aspects of the French Speaking world. Students can expect the majority of the course to be delivered in French and must be prepared to communicate in the language with the teacher and the rest of the class.

## What will I study?

The first part of the course is dedicated to bridging the gap between study at GCSE and A Level. There is a thorough revision of vocabulary and grammar taught at GCSE and new grammar is introduced.

The course will cover:

- Aspects of French-speaking society: current trends such as the changing nature of the family unit and the cyber-society
- Artistic culture in the French-speaking world, looking at contemporary francophone music and the French cinema industry
- The study of a French author
- The study of a French film
- Aspects of French-speaking society: current issues such as the positive features of a diverse society and law and order
- Aspects of political life in the French-speaking world such as democracy and voting, demonstrations and strikes



## How is the course assessed?

The course is assessed with a Listening, Reading and Writing Paper on the topics studied, an additional paper on the literary or cinematographic work studied and a Speaking Test on the topics studied. There is no coursework with this course.

*"Studying French is not just about the grammar and the vocabulary. The wealth of history and culture make it a captivating subject which will open your mind to different cultures."*  
Year 12 Student



# A Level Geography (OCR) (The King's School)

## What does this course involve?

Geography is an essential component in preparing young people for life in the twenty-first century. As the pace of change quickens, communications get faster and challenges to the environment multiply, a knowledge and understanding of geography is more vital than ever. Geography is unique in its study of human and physical patterns and the interaction of people and their environment in shaping the landscape. To supplement our A Level course, we offer a huge range so Super - Curricular opportunities including on-line lectures from universities such as Sheffield and UAE. We also expect all students to participate in our micro-lecture programme sponsored by the Royal Geographical Society.

Fieldwork is central to geography at King's and within the OCR specification we study. Geography is the study of the real world and therefore students have the opportunity to immerse themselves in a range of different environments. All students are required to attend a four-day residential fieldwork course in the Yorkshire Wolds to practice their skills in the field, which in 2024 took place in July and cost £375. There is also an option to join us in Iceland in March 2025, costing a maximum of £1,400 for an exciting and packed 5-day tour.



We are considered by universities to be a facilitating subject, supporting study in most other academic and vocational courses. But an advanced Geography qualification will place you in a very employable position, with a wide breadth of skills and knowledge. Whether you consider yourself stronger at the Humanities or the Sciences, Geography is an excellent companion to your other courses. We encourage students to discuss topical issues, analyse data and to search for patterns. These transferable skills are obviously very desirable and would make you a strong applicant for careers law, accountancy, architecture and a full range of other choices including medicine. Geographers have a very high employability rate due to the increasing demand from our UK's growing green economy.

## What will I study?

Three units are examination based. There is one piece of coursework:

- Unit 1: Tectonic Processes and Hazards; Coastal Landscapes and Change; The Water Cycle and Water Insecurity; The Carbon Cycle.
- Unit 2: Globalisation; Regenerating Places; Superpowers Global Development and Connections; Migration, Identity and Sovereignty.
- Unit 3: Synoptic Themes.
- Unit 4: Coursework.
- Fieldwork.

## How is the course assessed?

A Level Geography is assessed by examination and coursework. All A Level examinations are taken in June of Year 13.

# Level 3 Health and Social Care Diploma or Extended Diploma (Cambridge Technical)

## What does this course involve?

The **Level 3 Diploma in Health and Social Care** has been developed for learners aged 16+, who want to develop and apply their skills, knowledge and understanding in health, social care and child care. The Level 3 Diploma in Health and Social Care is an Applied General qualification which is the same size as two GCE A levels.

The **Level 3 Extended Diploma in Health and Social Care** has been developed for learners aged 16+, who want to develop and apply their skills, knowledge and understanding in health, social care and child care. The Level 3 Extended Diploma in Health and Social Care is an Applied General qualification which is the same size as three GCE A levels. The qualification is designed to fill a complete two-year study programme.

This qualification will provide students with the skills, knowledge and understanding that will allow them to progress onto Higher Education on a health and social care-related programme such as Health and Social Care, Nursing, Social Work or Early Childhood Studies.

## What will I study?

### Diploma in Health and Social Care

- Building positive relationships in health and social care
- Equality, diversity and rights in health and social care
- Health, safety and security in health and social care
- Anatomy and physiology for health and social care
- Personalisation and a person-centred approach to care
- Safeguarding
- The impact of long-term physiological conditions
- Infection control

### Extended Diploma in Health and Social Care

- Promote Positive behaviour
- Research methods in health, social care and childcare

Mandatory units are listed above, plus additional optional units. Extended diploma units will be in addition to the units taken on the diploma course.

These units will give learners an understanding of health and social care within the wider contexts of different environments and settings where care takes place, the different individuals that learners might meet and care for or support. The importance of effective communication in health and social care, the importance of legislation in health and social care and the principles behind the person-centred approach to care and how this is applied in the workplace. Students will also develop transferable skills such as communication skills as well as research, planning and organisation.

## How is the course assessed?

**Diploma in Health and Social Care** Students will take 12 or 13 units, made up of mandatory and optional units. 100 hours work experience.

**Level 3 Extended Diploma in Health and Social Care** Students will take 17 or 18 units, made up of mandatory and optional units. 100 hours work experience.

*"I find Health and Social Care really interesting, it helps me be able to learn how to keep a healthy life-style and how to take care of others."*

*Year 13 Head Student*

*"Health and Social Care has opened my mind to a variety of information, like how environments work, why professionals do what they do and how to keep environments safe."*

*Year 13 Student*

# A Level History (Edexcel)

## What does this course involve?

The A Level History qualification allows candidates to demonstrate the highest aptitude, literacy, discipline and intelligence. It provides a curriculum designed to ignite and engage students' passions and interest. The content will create independent learners, critical thinkers and decision-makers. These personal skills will make you stand out as you progress to higher education or the workplace.

## What will I study?

### Paper 1: Breadth study with interpretations:

- Britain 1625-1701: conflict, revolution and settlement
- The quest of political stability 1625-88
- Religion: conflict and dissent 1625-88
- Social and intellectual challenge 1625-88
- Economy, trade and empire 1625-88
- The changing quality of life, 1918-79

### Paper 2: Depth study:

- Russia in revolution 1894-1924
- The rule of Nicholas II, 1894-1905
- The end of Romanov rule, 1906-17
- The Provisional government and its opponents, February-October 1917
- Defending the Bolshevik revolution, October 1917-24

### Paper 3: Themes in breadth with aspects in depth:

- The witch craze in Britain, Europe and North America, c1580-c1750
  - Changing attitudes to witchcraft in Britain
- The wider intellectual context:
- The coming of the age of science and reason
  - The North Berwick witches in Scotland, 1590-91 and the aftermath to 1597
  - The Lancashire witches of 1604-13
  - The Great Witch Hunt, in Bamberg, Germany, 1623-32
  - Matthew Hopkins and the East Anglian witch craze, 1645-47
  - Cotton Mather and the Salem witch hunt, 1692-93

### Paper 4: Coursework

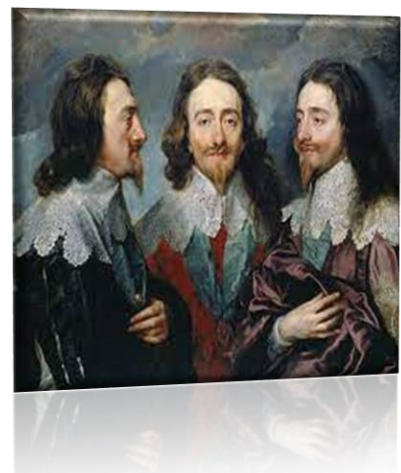
The coursework will be assessed using a centre-set assignment. Assignments must meet the requirements detailed below. An assignment framework is provided to support the development of individual assignments.

## How is the course assessed?

This is a linear A Level with all exams being taken at the end of Year 13. Coursework is worth 20% of the qualification.

*"I have been interested in history since GCSE and after doing well in my exams. I decided to study it at a further level, I enjoy how complex it is and how many factors are taken into consideration when coming to conclusions. Additionally, through history I have been able to improve my essay writing structure which will be useful for me at university."*

Year 13 Student



**Charles I in three positions  
Anthony van Dyck 1635**

# Level 3 IT Diploma (Cambridge Technical)

## What does this course involve?

The Level 3 Technical Diploma in IT is an exciting course that develops your understanding of the principles of IT and global information systems.

You will gain an insight into the IT sector and investigate technological change, the global flow of information and legal and security considerations. The knowledge, skills and understanding you develop will help you to either gain employment or prepare you for higher education. The course has been set up with industry professionals.



## What will I study?

The course is made up of eleven units over the 2 years.

Three compulsory units:

- Fundamentals of IT
- Global Information
- Application Design

Eight optional units including:

- Cyber Security
- Product Development
- Social Media and Digital Marketing
- Project Management
- Mobile Technology
- Game Design
- Web Development
- Internet of everything

## How is the course assessed?

The Level 3 Technical Diploma is mainly coursework marked by your teacher and checked by the exam board. Three units over the 2 years are examinations. All units have the skills taught and then assessed with the project work or exam.

## What can I do after this course?

If you are interested in learning more about IT, how it is used in society and business, then this course is for you.

*"The reason why I have chosen this course is because I have always had an interest in technology as well as this I thought that this course would be good for me as it's something I would want to go deeper into through a university course like computer science. I think that this course has a lot of interesting subjects, for example, application development and the IOE as they are both topics that contain a lot of information and they are both topics that are always adapting and increasing in popularity. Furthermore IT in general is always adapting which also peaked my interest and was one of the reasons why I decided to take this course as the IT industry is ever evolving which is why I have been interested in the course for a long period of time and why I have decided to take it."*

Year 12 Student

# A Level Mathematics (AQA)

## What does this course involve?

The Mathematics course builds on many concepts studied at GCSE, as well as introducing new concepts. Students will extend their range of mathematical skills and techniques and use them in a variety of contexts. All of the units within the course are designed to ensure students understand the need to use appropriate techniques within models of real world situations, use mathematics as an effective means of communication and develop skills in problem-solving and organisation.

## What will I study?

Students study Pure Mathematics and Applied Mathematics.

The principal components of Pure Mathematics are:

- Algebra and functions
- Coordinate geometry
- Trigonometry
- Calculus
- Sequences and series

The Applied Mathematics units are Statistics and Mechanics Mathematics.

Statistics includes:

- Representation and summary of data
- Probability
- Correlation and regression
- Discrete random variables
- The Normal distribution

Mechanics Mathematics includes:

- Kinematics
- Newton's Laws
- Vectors
- Momentum
- Moments

## How is the course assessed?

Examination papers are split into three units of 90 minutes which covers Pure Mathematics in three even parts. Mechanics is included in Paper 2 and Statistics in Paper 3.

# A Level Physics (Edexcel) (The King's School)

## What does this course involve?

The Physics course at King's is a fantastic opportunity to deepen your understanding of matter, forces and energy. From the ideas behind the Newtons cradle to calculating the age of the universe, you will take part in exciting, interactive lessons where a large proportion of them will be practically based. You will use slow motion tracking software to see how projectiles work, use data loggers to analyse movement, as well using electron deflection tubes to calculate the speed at which the electrons are travelling.

We have a strong team of teachers who are able to use their excellent subject knowledge and experience to deliver engaging and inspiring lessons. Support is not just limited to the classroom as the team are happy to support you both in and out of lessons. Physics is a well-represented A Level in King's with approximately 30-40 students choosing to study it, from a variety of different backgrounds but all with a common interest in finding out about how things work.

Physics is a highly respected A Level. It demonstrates your analytical and mathematical skills which can be applied to real life situations, so studying it opens the door to many different careers from the more traditional routes of Physics, Engineering and Computer Sciences, to Medicine, Mathematics, Finance and Architecture. Even if an eventual career in Physics is not for you the skills you will develop during the course will travel with you to the next stage of your life.

## What will I study?

### Year 1

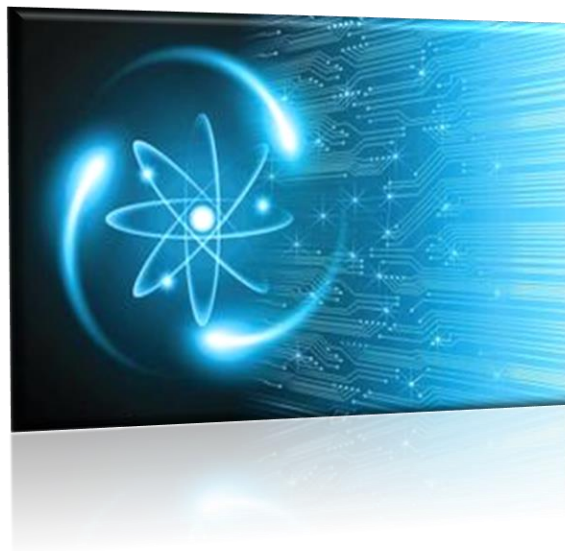
- Mechanics
- Electric Circuits
- Materials
- Waves and the particle nature of light

### Year 2

- Further Mechanics
- Electric and magnetic fields
- Nuclear and particle physics
- Thermodynamics
- Space
- Nuclear radiation
- Gravitational fields
- Oscillations

## How is the course assessed?

2 papers 1¾ hrs and one 2½ hrs.



# A Level Psychology (AQA) (The King's School)

## What does this course involve?

The Psychology A Level course at King's is an exciting opportunity to study concepts that affect all of us in our daily lives. Each lesson looks at an aspect of human experience and explores research and theories relating to that topic.

Students are encouraged to question ideas and challenge assumptions in the light of new evidence. A whole range of topical subjects are considered including criminal behaviour; social media, mental health and wellbeing; and the causes and treatments for psychological disorders, such as obsessive compulsive disorder (OCD), depression and phobia.

Psychology complements a range of subject choices and vocations. Over the course of the year you will encounter aspects of Biology, History, English Literature, Maths, Art and Drama. The course will help you to develop skills related to a range of disciplines, including debating, essay and report writing, designing experiments and data analysis. The A Level can provide you with skills and knowledge in preparation for careers in the criminal justice system, medicine, social care, finance, research and business.

Psychology is a very popular A Level choice at King's and a significant number of students choose to study it at university. Beyond the traditional psychology degree, there is a growing range of specialism courses on offer including forensic psychology, counselling, child development and sports psychology.

Over the years, students who have studied Psychology at university have progressed on to pursue a wide range of careers. With some further specialised study, it can lead to careers in marketing / advertising, neuroscience, education and criminology. This is not an exclusive list, psychology offers students significant flexibility in how it can be used for career development.

## What will I study?

### Year 1

#### Compulsory Units:

- Social influence
- Memory
- Attachment
- Approaches in Psychology
- Psychopathology
- Research Methods

### Year 2

#### Compulsory Units:

- Biopsychology
- Issues and Debates in Psychology

#### Optional Units

- Opt 1 – Relationships/Gender/Cognition
- Opt 2 – Schizophrenia/Eating Behaviour/Stress
- Opt 3 – Aggression/Forensic Psychology/Addiction

## How is the course assessed?

Paper 1: 2 hr exam, 33.3% of A Level, Paper 2: 2 hr exam, 33.3% of A Level.

Paper 3: 2 hr exam, 33.3% of A Level.



# A Level Religious Studies (Edexcel)

## What does this course involve?

The A level Religious Studies specification offers a wide choice of topics within the national guidelines. The course is relevant to the real world and encourages students to develop an appreciation of religious thought and its contribution to individuals, communities and societies.

Edexcel Religious Studies at A Level encourages candidates to:

- Develop their interest in, and enthusiasm for, a rigorous study of religion and its relation to the wider world
- Treat the subject as an academic discipline by developing knowledge, understanding and skills appropriate to a specialist study of religion
- Adopt an enquiring, critical and reflective approach to the study of religion
- Reflect on and develop their own values, opinions and attitudes in the light of their learning

## What will I study?

We offer three out of four areas of study

- Philosophy of Religion
- Religion and Ethics
- New Testament Studies

## How is the course assessed?

In year 13 students will sit three 2 hour exams testing course material studied in year 12 also.

*“RS is a great A level if you love debating topical issues, allowing you to make informed debates on political actions, Ethical issues, laws and so much more! The course allows you to think deeper about the role of religion in modern society.”*

*Year 12 Student*



# A Level Sociology (OCR)

## What does this course involve?

A level Sociology is an exciting course which gives a detailed insight into the study of our society – how it works, what happens when there is conflict and major issues such as income, social class, the family and education. Students study textbooks, surveys and newspapers and use both primary and secondary data. Students who have not previously studied Sociology can capably study the A level and are welcomed and encouraged to do so.

## What will I study?

### Year 1

Introducing socialisation, culture.

- What is culture, socialisation and identity?
- Families and relationships
- Family diversity
- Changing roles and relationships within families

Research methods & social inequalities

- What is the relation between theory and methods?
- What are the main stages of the research process?
- What methods are used in sociological research?

Understanding social inequalities

- What are the main patterns and trends in social inequality in relation to Class and Gender?
- How can patterns and trends be explained?
- Functionalism/Marxism/Feminism

### Year 2

Understanding social inequalities (Cont.)

- What are the main patterns and trends in social inequality in relation to Ethnicity and Age?
- How can patterns and trends be explained?
- Weberianism/New Right

Globalisation and digital social world

- What is the relationship between globalisation and digital forms of communication?
- What is the impact of digital forms of communication in a global context?

Education

- What is the role of education in society?
- What are the patterns and trends of educational inequalities?
- How can differential educational achievement be explained?
- How has the UK education system changed?

## How is the course assessed?

Each component has an exam taken at the end of year 13.

*“Sociology opens your eyes to the inner workings of society. It gives you the critical analysis skills needed for many course, I think the lessons can be very interesting”*

*Year 12 Student*

# A Level Spanish (AQA)

## What does this course involve?

This exciting new course offers the opportunity to study a film, literature and history alongside the culture, politics and social aspects of the Spanish Speaking world. Students can expect the majority of the course to be delivered in Spanish and must be prepared to communicate in the language with the teacher and the rest of the class.



## What will I study?

The first part of the course is dedicated to bridging the gap between study at GCSE and A Level. There is a thorough revision of vocabulary and grammar taught at GCSE and new grammar is introduced.

The course will cover:

- Aspects of Spanish-speaking society: current trends such as the changing nature of the family unit and the cyber-society
- Artistic culture in the Spanish-speaking world, looking at contemporary hispanophone music and the Spanish cinema industry
- The study of a Spanish author
- The study of a Spanish film
- Aspects of Spanish-speaking society: current issues such as the positive features of a diverse society and law and order
- Aspects of political life in the Spanish-speaking world such as democracy and voting, popular movements and dictatorships

## How is the course assessed?

The course is assessed with a Listening, Reading and Writing Paper on the topics studied, an additional paper on the literary or cinematographic work studied and a Speaking Test on the topics studied. There is no coursework with this course.

*“Learning a language is something meaningful that will allow me to travel and be immersed with different cultures. It has developed my understanding of the grammar of my own language and I find myself fascinated by the history and the culture of Spain and other Spanish-speaking countries.”*

*Year 12 Student*

# Level 3 Sports Diploma (YDP) in Sport and Physical Activity (Cambridge Technical)

## What does this course involve?

This diploma is not just about being able to play sport or deal with elite athletes; employers need people who are able to develop sports skills for teams and individuals, work with clients and participants to improve their fitness and change their lifestyles and monitor progress and improvement over time, adapting practices and approaches to suit the needs of individuals. Therefore, this qualification will develop learners' skills in preparation for employment in sports coaching or personal training either through an apprenticeship or directly into work. These units will give learners skills, knowledge and understanding related to key aspects which underpin how sport and physical activity is delivered and organised, such as anatomy and physiology in relation to physical performance, coaching skills, the structure of sport in the UK and the organisations involved, the target groups that would most benefit from participation in physical activity and why and safe practice in sport and leisure. Learners will also develop transferable skills that employers are looking for such as planning, communication, adaptability and leadership.

The diploma is the equivalent to 2 A Levels.

## What will I study?

- Body systems and the effects of physical activity
- Sports coaching and activity leadership
- Sports organisation and development
- Working safely in sport, exercise, health and leisure
- Physical activity for specific groups
- Performance analysis in sport and exercise
- Sports injuries and rehabilitation
- Organisation of sports events
- Health and Fitness Testing
- Sport and Exercise Psychology
- Practical Skills in Sport and Physical Activities



## How is the course assessed?

3 Examinations and 8 Coursework units that are moderated internally and externally.

*"I study a Level 3 Diploma in Sport and Active Leisure. This is part of a YDP Football Scholarship. I love the course as we get to train and play football throughout the week as well as study many aspects of the Sports industry. It is a great course as I have gained lots of coaching and sports leadership experience. I have planned sports events for primary schools as well as helping out with primary sports days. My knowledge of sports anatomy and physiology has improved and I am currently loving the sports injuries unit. The course is very interesting and YDP provide great work experience in coaching and football. The football is great, the training sessions are intense and have improved my skills as a footballer greatly. I highly recommend the course."*

*Year 13 Student*

# Level 3 Extended Certificate in Sport and Physical Activity (Cambridge Technical)

## What does this course involve?

This qualification is not just about being able to play sport, it will provide learners with the skills, knowledge and understanding to progress into Higher Education on a sport-related programme such as Sport and Physical Education, Sport Science, Sport Coaching and Development or Sport and Leisure Management. These units will give learners an understanding of sport in the wider contexts of coaching and leadership, anatomy and physiology, the body's short and long-term responses to physical activity and the framework of sport in the UK and the organisations involved. Learners will also develop transferable skills such as planning, communication, adaptability and leadership. The course is the equivalent to 1 A Level.

## What will I study?

- Body systems and the effects of physical activity
- Sports coaching and activity leadership
- Sports organisation and development
- Sports injuries and rehabilitation
- Organisation of sports events

## How is the course assessed?

2 Examinations and 3 Coursework units that are moderated internally and externally.

## Where next?

The course aims to make learners more employable. You may choose to go directly into employment within the Sports Development, Coaching and Fitness Industry or onto study a variety of Higher Education courses at university.

*"I chose this course as I have a passion for sport. I like that the course covers lots of different areas of sport, we have looked at Anatomy and Physiology of the body, sports coaching, sports physiotherapy and rehabilitation as well as sports development. This gives me a broad knowledge of sport and will help me get a job in sport and further qualifications in sport. The course is very interesting and enjoyable."*

*Year 13 Student*

# Post-16 Admissions

## Admissions Criteria

We want Year 12 students at St John Fisher to follow a route to success that relates to their interests and abilities. For this reason all courses in Year 12 have entry requirements. These requirements are based on our understanding of the demands of the courses and of the qualities which students need to meet these demands successfully.

Students wanting to study alternative courses are signposted to local FE colleges and other institutions.

## Criteria for access to Level 3 courses

Requirements for Level 3 courses are 5 GCSEs at grade 5 or better, usually including Maths and English and representing at least 4 different courses taken in one examination period. Please note that an individual subject cannot count for more than 2 GCSEs.

For students embarking on an A level which requires essay-writing, English language GCSE Level 5 or equivalent is essential. Maths GCSE Level 5 or equivalent is of similar status for those embarking on scientific or technological studies

In order to study specific subjects at Level 3 we strongly recommend that students should have achieved at least a Level 6 at GCSE in subjects which they wish to pursue at A level. Many courses have additional specific requirements; see our 'Entry Requirements' in the prospectus for full details.

Requirements for Level 3 vocational courses, for example Cambridge Technical qualifications are:

Health and Social Care, IT and Business: a minimum of four 4 grades, including a grade 4 in English Language.

Sports Scholarship: a minimum of four 3 grades, including a grade 4 in English Language.

The school reserves the right to refuse a place to students who may have achieved the entry requirements but are not deemed suitable for Level 3 study.

If a course is oversubscribed at the application deadline, students will be allocated to the course according to their previous qualifications in that subject, with priority given to those who have the higher ability. If a further distinction between applicants is required priority will be given to the student who has the fewest alternative courses available to them.

## Programmes available

The majority of Level 3 students will study three Level 3 courses (3 A levels or a combination of vocational courses and A Levels) plus core RE, PSHE and an enrichment course. All students must continue studying GCSE English Language and/or Mathematics if a grade 4 has not been achieved.

## Guidelines for Applicants

The total number of places available in the Sixth Form is 150. Priority is given to applications from current students at St John Fisher who wish to continue their studies here. Of these, priority will be given to applications received by the published deadline, and each applicant's behaviour, attendance, punctuality and reference (external students) will be considered carefully before we make an offer of a place.

If the school has more applications than places available parents may elect to place their child's name on a waiting list. Students will be placed on the waiting list in strict order according to the oversubscription criteria on the Admissions Policy. If a place becomes available at the school, places will be allocated according to this criterion.

The waiting list will be held from the allocation of places date until the end of December in Year 12. Applicants must inform the school on GCSE results day that they wish to remain on the waiting list by telephoning the school.

We invite all (external) students who meet our entry criteria into the school to discuss our expectations, answer any questions students may have and clarify options. Parents are also welcome to attend with students. In addition, students and parents are shown around the school by our own students. We feel this is important as it gives them the chance to see the school during a normal day and to speak to our students about their experiences at St John Fisher, thus giving them a true reflection of life at the school. These visits can take place during the autumn and spring terms.

Successful applicants will be contacted within four weeks of their interview with an offer conditional on their GCSE results meeting their chosen courses requirements, there being spaces in the Sixth Form and on their chosen courses.

Applicants are expected to reply to their offer by 1<sup>st</sup> June and may only accept one offer.

External applicants are expected to submit their GCSE grades on results day and attend the school to confirm their place. Failure to do so may result in their place being reallocated.

All places offered to external applicants are provisional, depending on grades achieved and also on there being places available in the sixth form and on the chosen courses following the admission of current students transferring from year 11.

## How to Apply

Current SJF students should complete the school's application form for Sixth Form Admission on page 31 of this booklet.

External applicants should complete the school's application form for Sixth Form Admission on page 33 of this booklet.

All application forms should be returned by Friday 20 December 2024 to:

**Internal Students:**

Student Services

**External Students:**

Sixth Form Admissions

St John Fisher Catholic High School, Park Lane,  
Peterborough, PE1 5JN

## Timeline

Date	Event
November/December 2024	<ul style="list-style-type: none"> <li>Careers interview with students -all Year 11 students will be interviewed regardless of their intended destination</li> </ul>
20 December 2024	<ul style="list-style-type: none"> <li>Internal students intending to apply to Sixth Form at St John Fisher must complete the internal application form</li> <li>External students must complete the external application form</li> </ul>
January/February 2025	<ul style="list-style-type: none"> <li>Sixth Form Interviews for internal applicants</li> </ul>
March 2025	<ul style="list-style-type: none"> <li>Sixth Form interviews for external applicants</li> <li>Offer letters will be issued (March, April and May)</li> </ul>
May/June 2025	<ul style="list-style-type: none"> <li>Students will complete external examinations in all GCSE subjects</li> </ul>
June 2025	<ul style="list-style-type: none"> <li>Sixth Form Induction day (date to be confirmed)</li> </ul>
August 2025	<ul style="list-style-type: none"> <li>GCSE results will be released to students on the morning of GCSE Results Day</li> <li>Staff will be available to advise students who require further support with the Post-16 choices during the morning of GCSE results day</li> <li><b>All students should confirm their place at SJF Sixth Form on Results day</b></li> </ul>

# Application for Sixth Form Admission – September 2025

(For completion by **SJF** students only)

Name		Tutor Group	
Address <i>(inc Postcode)</i>		Date of Birth	
		Telephone Number	
Email		Mobile Number	

Please select a total of 3 subjects and 1 reserve from any of the subjects listed below in priority order (1-3). If a subject shows as a double, then only choose 2 subjects and 1 reserve. If a subject shows as a triple, then you need only choose 1 reserve (State R for reserve).

	Art		English Literature		History		Sociology
	Biology		French		IT (Double)		Spanish
	Business		Geography		Maths		Sports Studies (Single)
	Chemistry		Health & Social Care (Double)		Physics		Sports Studies (Double)
	English Language		Health & Social Care (Triple)		Religious Studies		

Other courses not listed above: \_\_\_\_\_

Reasons for applying for these courses. Include future career interests.
Other information you wish to include (hobbies, interests and previous achievements).

Signed by student: \_\_\_\_\_ Date: \_\_\_\_\_

Statement by parent/carer: This application has my consent:

Signed: \_\_\_\_\_ Name: \_\_\_\_\_

Relationship to child: \_\_\_\_\_ Date: \_\_\_\_\_

Please Return to: Student Services by no later than Friday 20 December 2024.

FAO: RV





Tear Here  
Tear Here  
Tear Here  
Tear Here  
Tear Here  
Tear Here

# Application for Sixth Form Admission – September 2025

## (For completion by External applicants only)

Please complete all the information below and provide copies of the following documents:

- Baptismal Certificate/evidence from Religious Leader
- Proof of home address (rent book or utility bill)
- Passport or Birth Certificate
- Any reports you may have from your previous school

Family Name: \_\_\_\_\_ Male/Female (delete as applicable)

First Name(s): \_\_\_\_\_ Date of Birth: \_\_\_\_\_

Home Language: \_\_\_\_\_ Current Year Group: \_\_\_\_\_

Date of Entry to UK (if applicable): \_\_\_\_\_ Email address: \_\_\_\_\_

Home Address: \_\_\_\_\_

Postcode: \_\_\_\_\_ Home Telephone Number: \_\_\_\_\_

---

Full name of Mother/Guardian: \_\_\_\_\_

Day time telephone number: \_\_\_\_\_

Full name of Father/Guardian: \_\_\_\_\_

Day time telephone number: \_\_\_\_\_

---

Religion: \_\_\_\_\_ Place of Baptism: \_\_\_\_\_

(a copy of Baptismal Certificate is required as proof of baptism)

Name and address of Church of other Place of Worship: \_\_\_\_\_

---

Name of Priest, Minister of Religion or Leader of Faith Community to whom the family is known: \_\_\_\_\_

---

Present/Previous school: \_\_\_\_\_

Address: \_\_\_\_\_

Date of Admission: \_\_\_\_\_ Date of Leaving: \_\_\_\_\_

Name(s) of sibling(s) at St John Fisher Catholic High School

\_\_\_\_\_ DOB: \_\_\_\_\_ Year Group: \_\_\_\_\_

\_\_\_\_\_ DOB: \_\_\_\_\_ Year Group: \_\_\_\_\_

---

Reason for choosing St John Fisher Catholic High School: \_\_\_\_\_

Compassionate factors you would like the Governors to take into account: \_\_\_\_\_

Any other information you wish to be considered: \_\_\_\_\_

---

---

Please select a total of 3 subjects and 1 reserve from any of the subjects listed below in priority order (1-3). If a subject shows as a double, then only choose 2 subjects and 1 reserve. If a subject shows as a triple, then you need only choose 1 reserve (State R for reserve).

	Art		English Literature		History		Sociology
	Biology		French		IT (Double)		Spanish
	Business		Geography		Maths		Sports Studies (Single)
	Chemistry		Health & Social Care (Double)		Physics		Sports Studies (Double)
	English Language		Health & Social Care (Triple)		Religious Studies		

Other courses not listed above: \_\_\_\_\_

Reasons for applying for these courses. Include future career interests.
Other information you wish to include (hobbies, interests and previous achievements).

**Declaration (to be completed by the parent):**

To the best of my knowledge the information given in this application is correct. I agree to notify the Governors of St John Fisher Catholic High School immediately of any change of address or other circumstance.

Signed: \_\_\_\_\_ Name: \_\_\_\_\_

Relationship to child: \_\_\_\_\_ Date: \_\_\_\_\_

Please return to: Sixth Form Admissions, St John Fisher Catholic High School, Park Lane, Peterborough, PE1 5JN by no later than Friday 20 December 2024.

